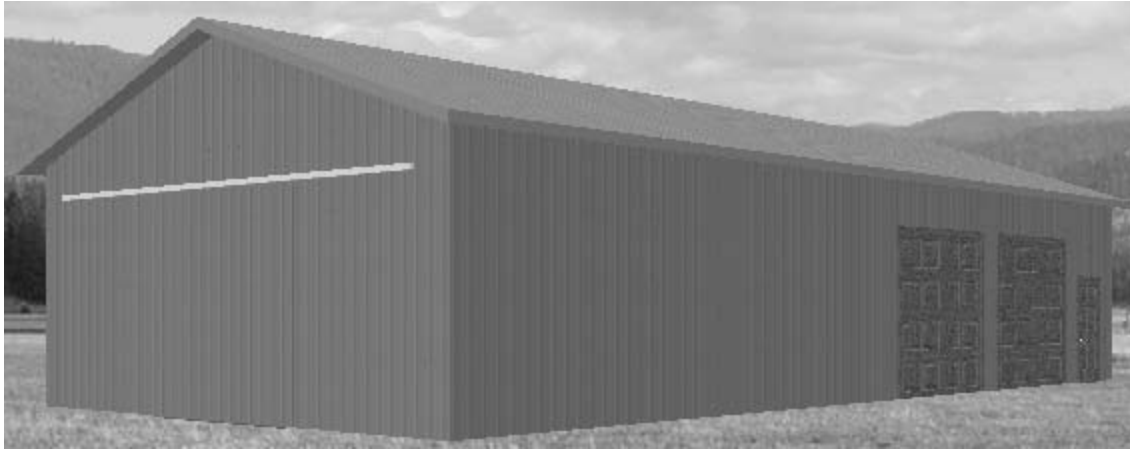
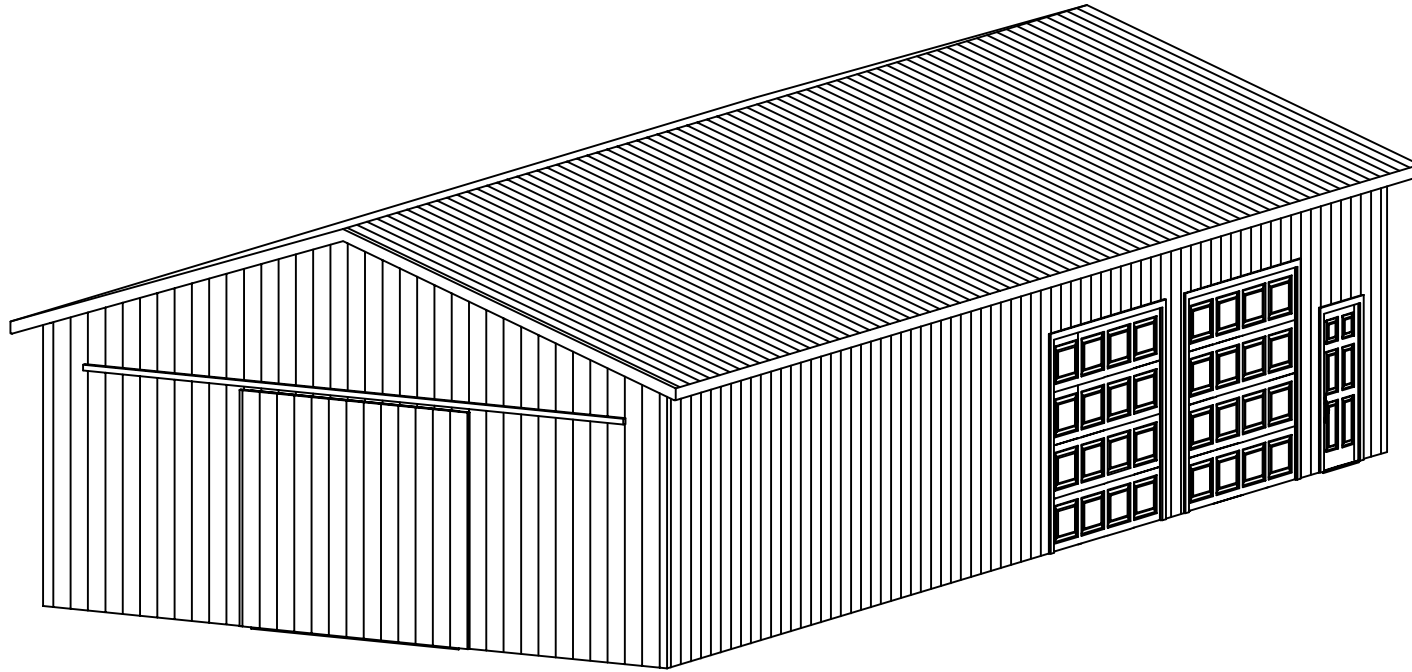


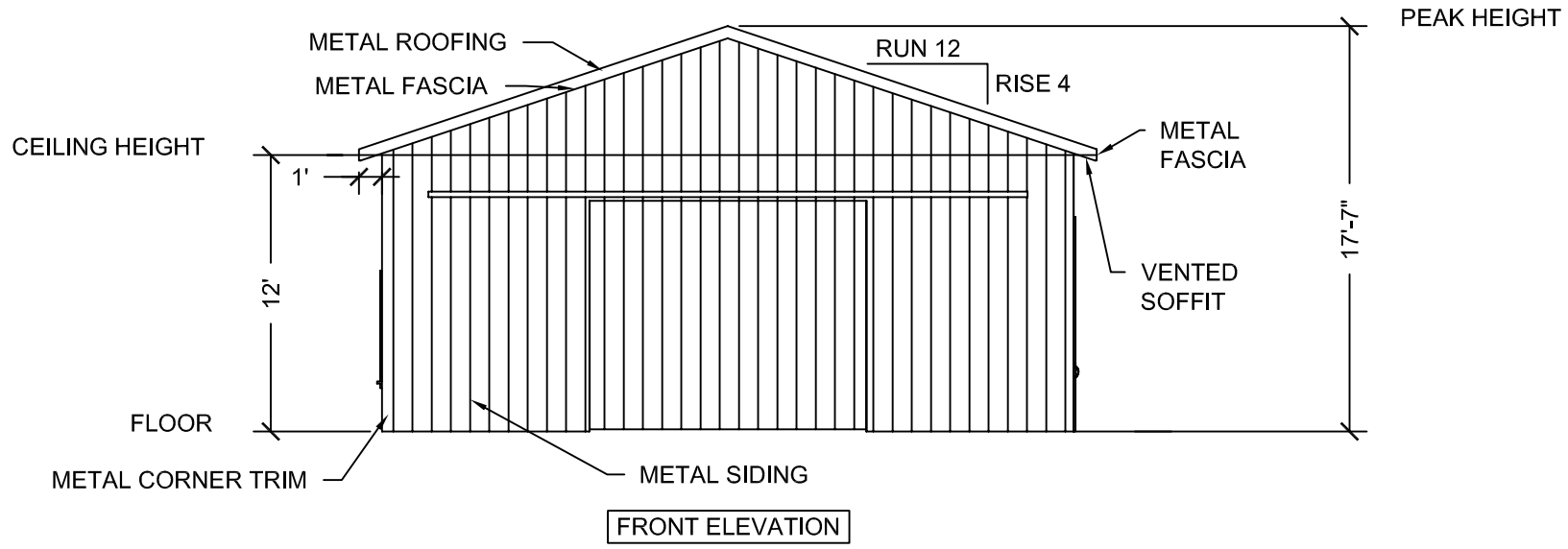
30'x60' POLE BARN



- 1- 10'X10' SLIDING DOOR
- 2- 9'X9' SECTIONAL GARAGE DOORS
- 1- 3'X6'-8" ENTRY DOOR
- 4/12 PITCH METAL ROOF
- METAL SIDING
- WINDOWS (OPTIONAL)
- CONCRETE SLAB (OPTIONAL)
- PARTITION WALL (OPTIONAL)



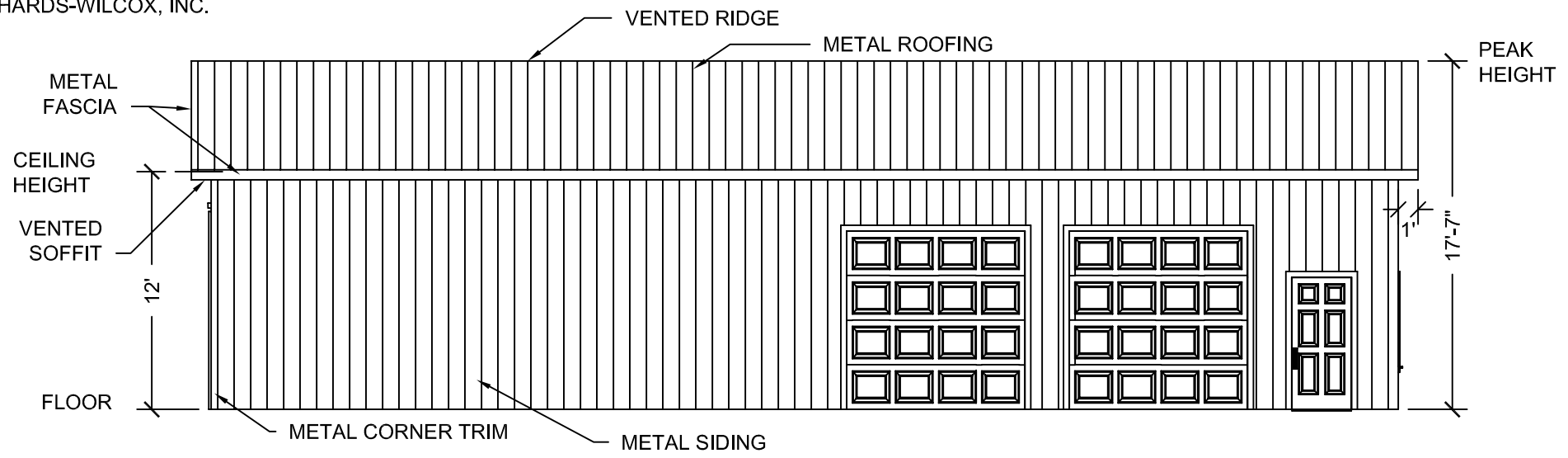
INDEX	
PAGE	DESCRIPTION
1	FRONT & RIGHT ELEVATIONS
2	BACK & LEFT ELEVATIONS
3	FLOOR PLAN
4	SECTION A-A
5	SECTION B-B, F-F, G-G
6	DETAILS
7	DOORWAY FRAME DETAIL, SECTIONS D-D, H-H
8	SECTIONS C-C, E-E, WINDOW FRAME ELEVATION DETAIL
9	OPTIONAL POST FOOTING DETAILS
10	FRAME PICTORIAL, DOOR & WINDOW SCHEDULE
11	SPECIFICATIONS
12	BILL OF MATERIALS



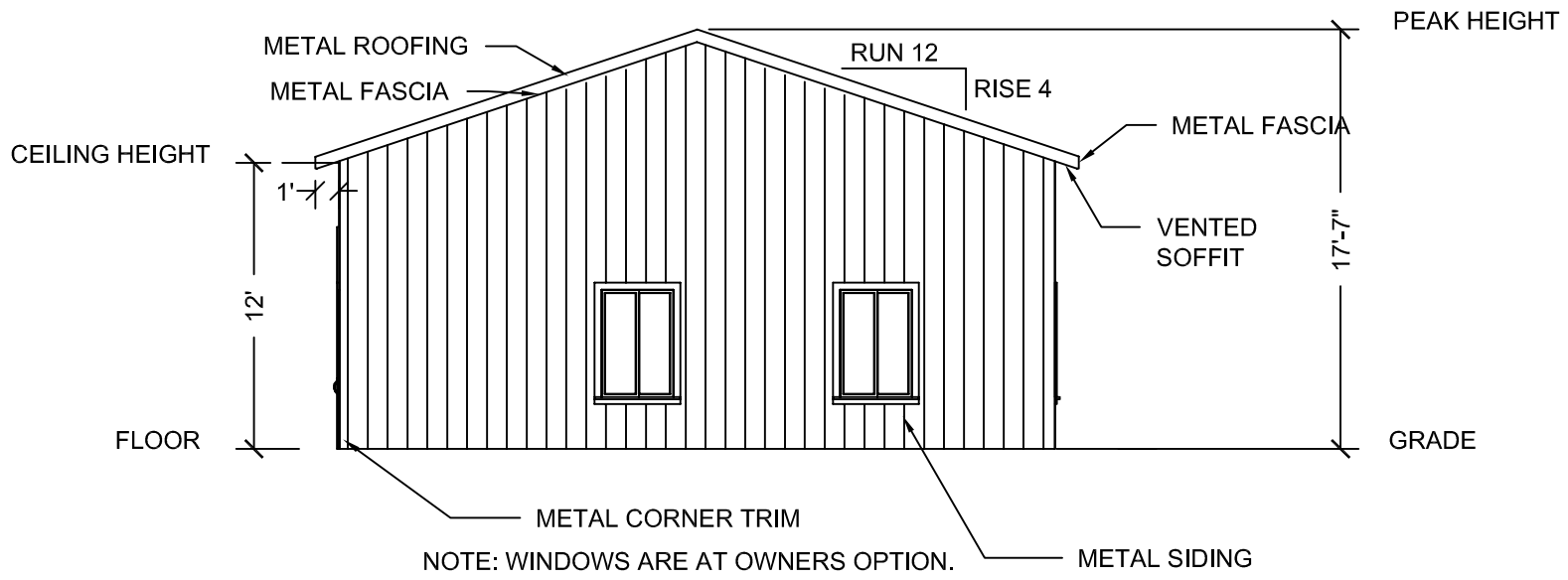
FRONT ELEVATION

POSSIBLE SOURCES OF DOOR HARDWARE INCLUDE BUT ARE NOT LIMITED TO:

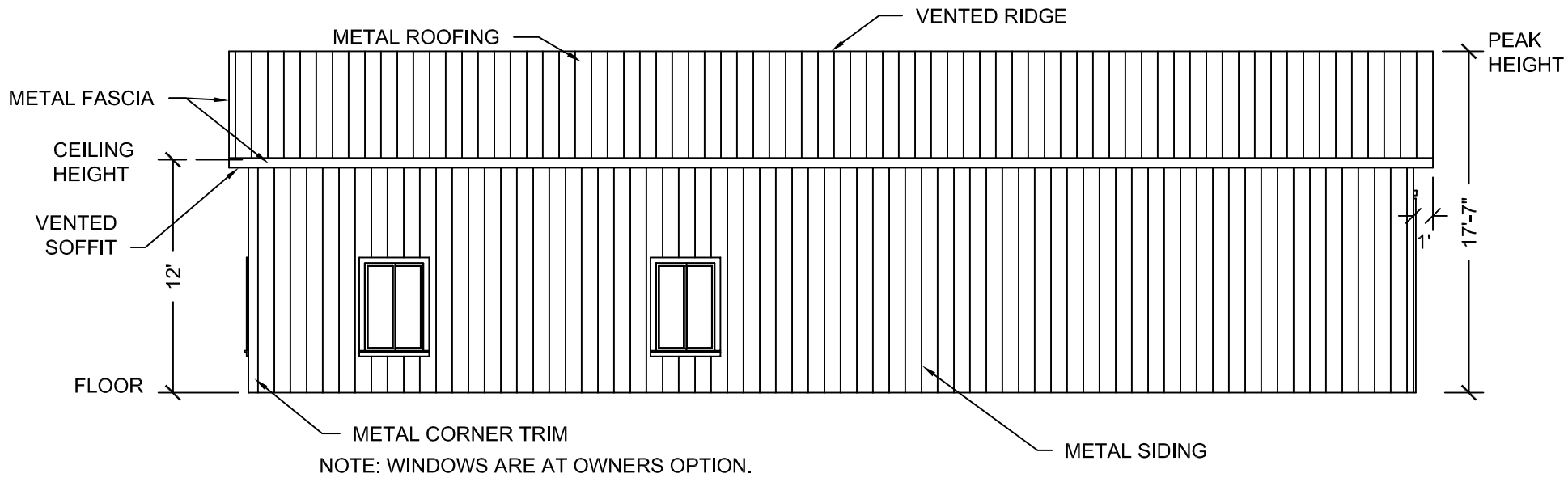
- STANLEY HARDWARE
- CROWN INDUSTRIAL
- RICHARDS-WILCOX, INC.



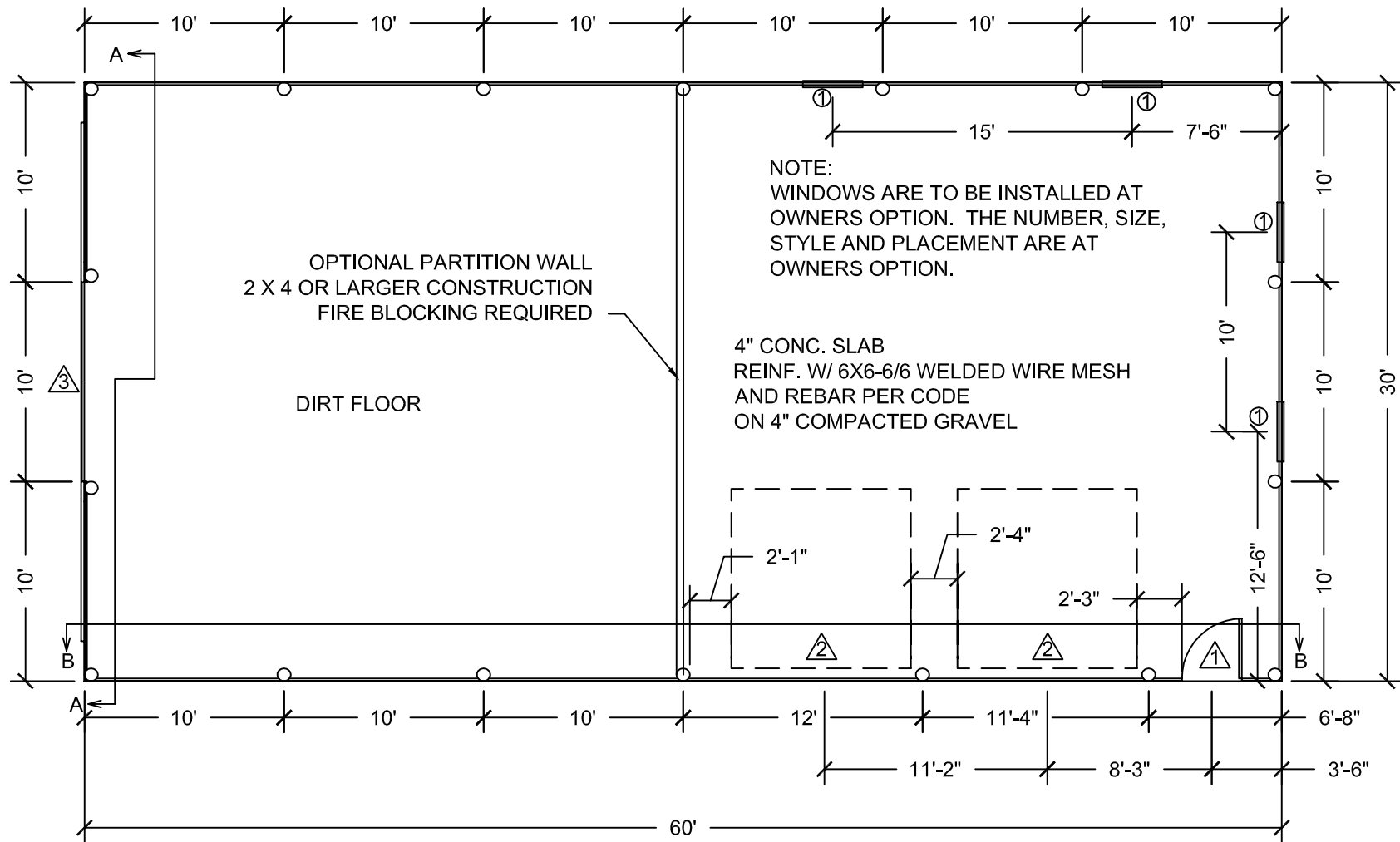
RIGHT ELEVATION

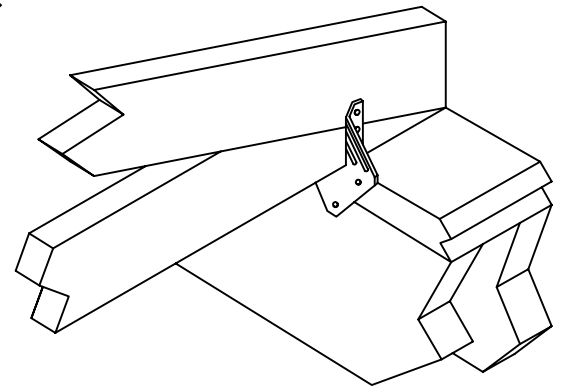
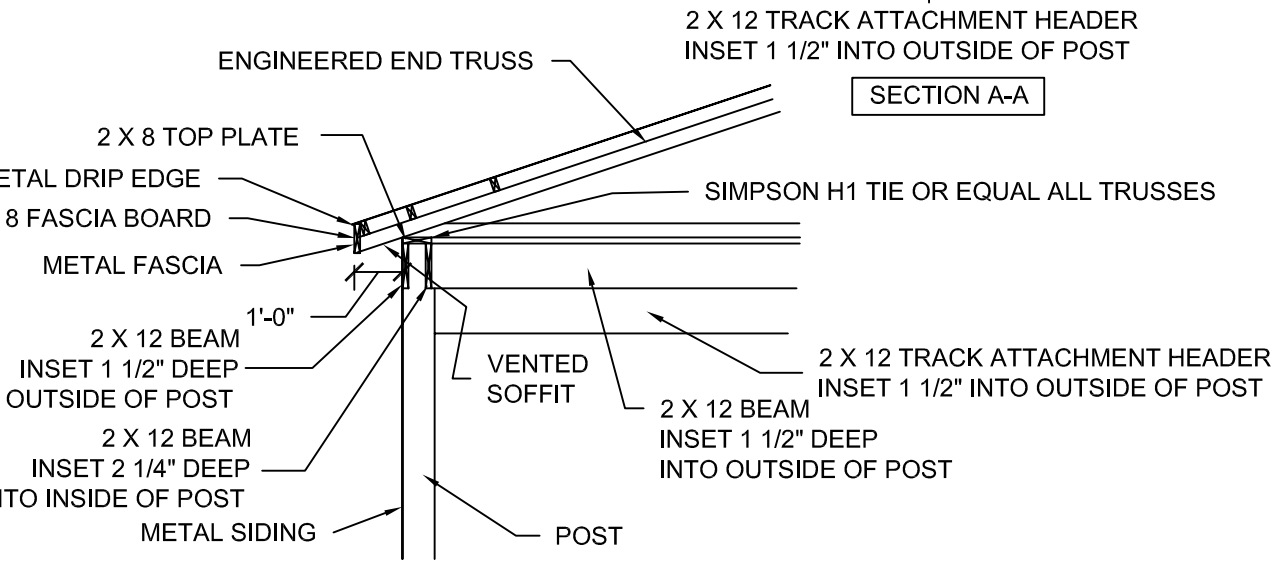
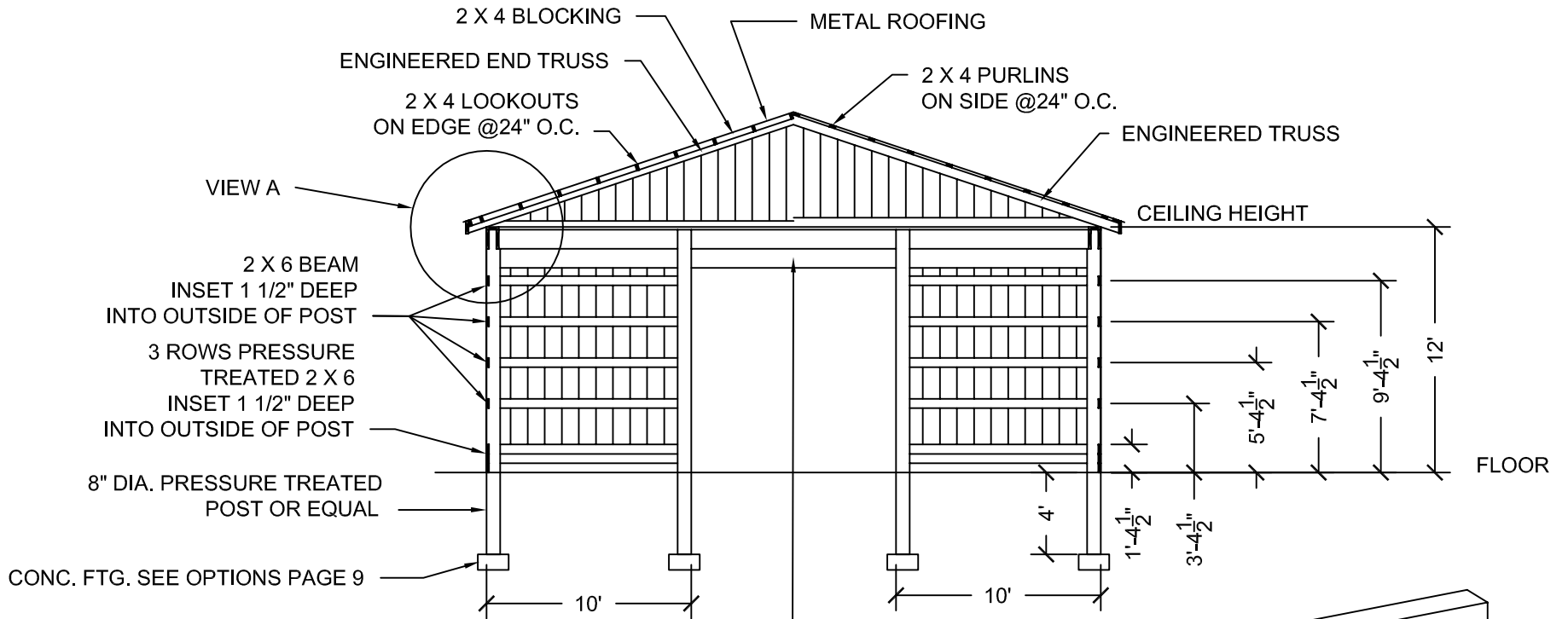


BACK ELEVATION



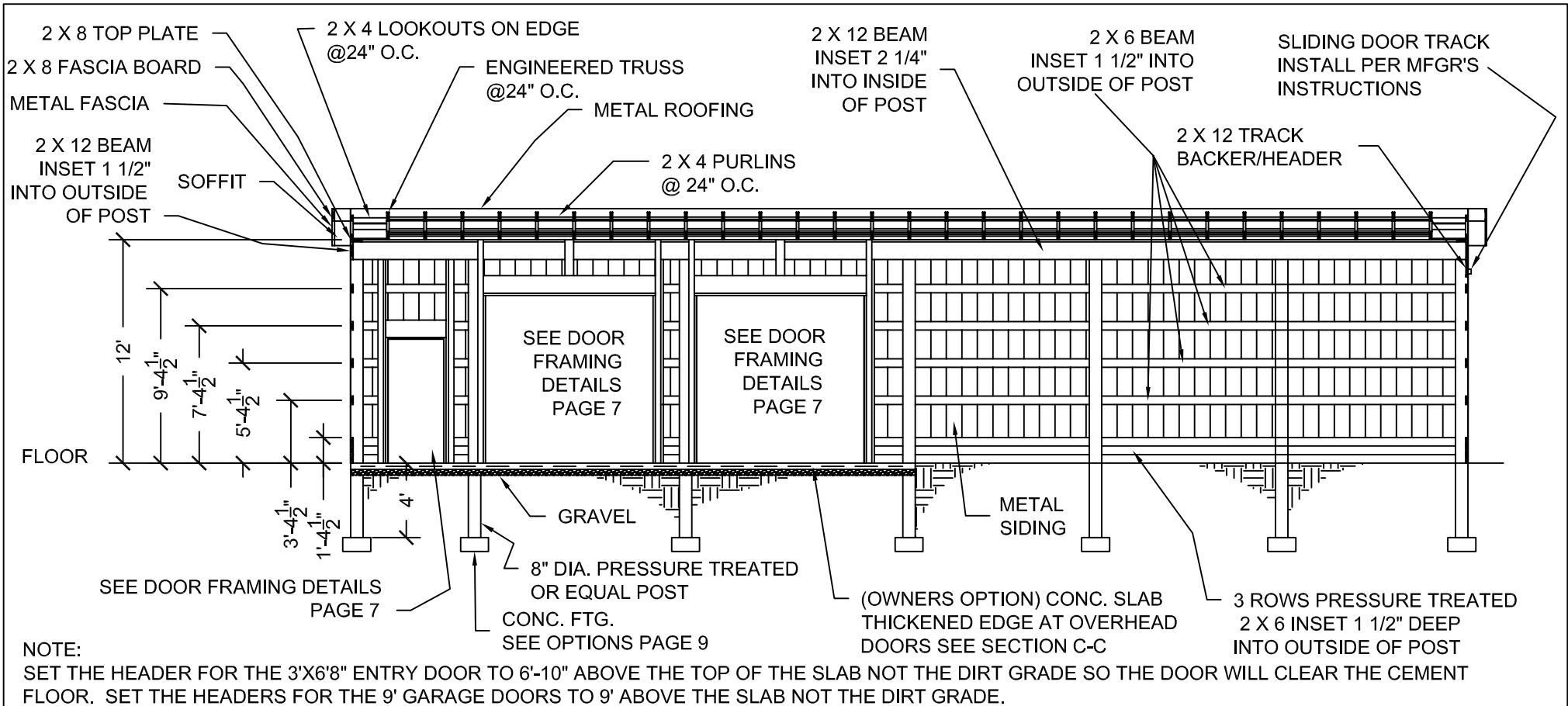
LEFT ELEVATION



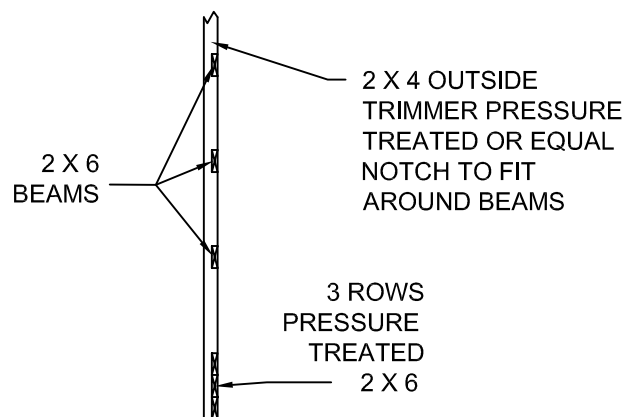


SIMPSON H1 INSTALLATION
SCALE: NTS

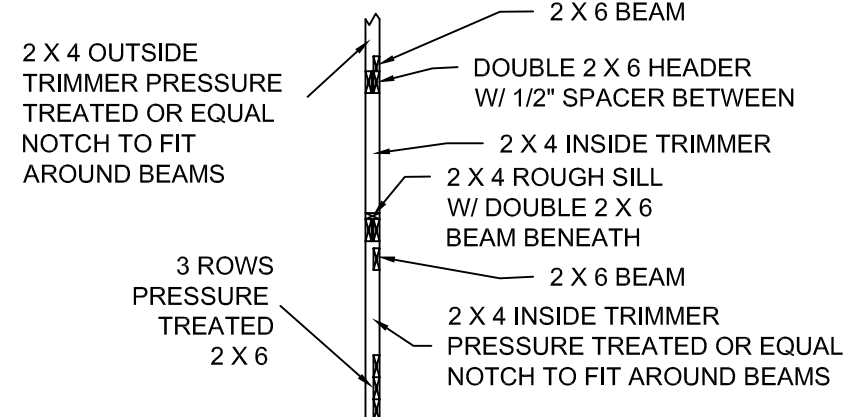
VIEW A
SCALE: 1/4" = 1"



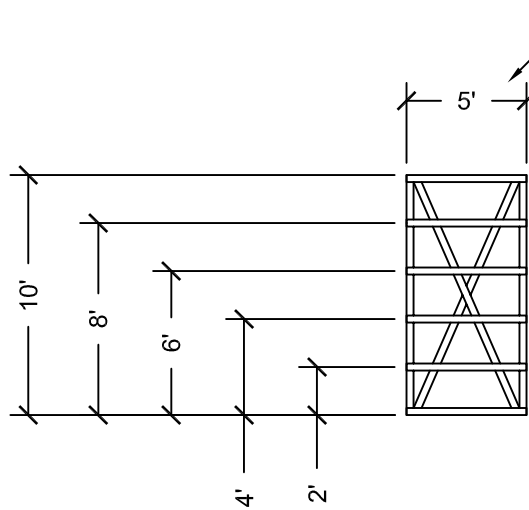
SECTION B-B



SECTION F-F
SCALE 1/4" = 1"



SECTION G-G
SCALE 1/4" = 1"

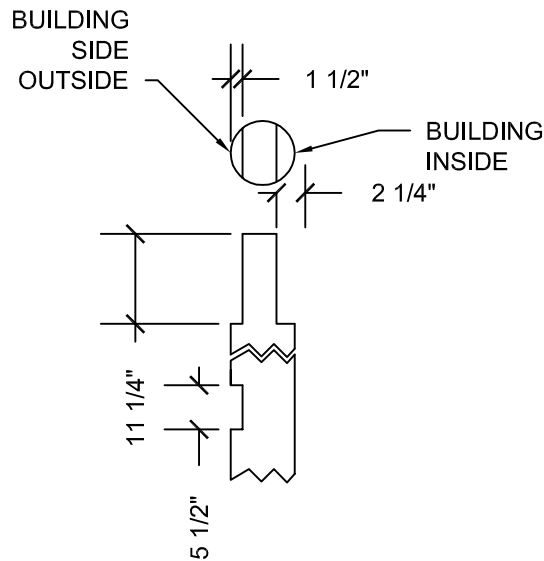


IF AN OVERLAP IS WANTED BETWEEN THE DOOR AND DOORWAY INCREASE THIS DIMENSION BY THE DESIRED OVERLAP

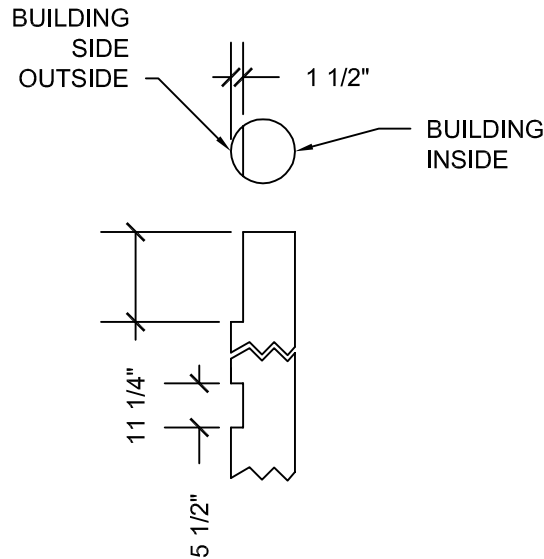
NOTE:

ALL MATERIAL IS PRESSURE TREATED 2 X 4 OR EQUAL.
 ALL JOINTS ARE HALF LAP.
 GLUE ALL JOINTS WITH POLYURETHANE WOOD GLUE OR EQUIVALENT.
 USE RUST RESISTANT SCREWS ON ALL JOINTS.
 MAKE TWO IDENTICAL FRAMES.
 INSTALL DOORS WITH A MINIMUM 1" CLEARANCE AT THE BOTTOM.
 INSTALL ALL DOOR HARDWARE ACCORDING TO MFR'S INSTRUCTIONS.

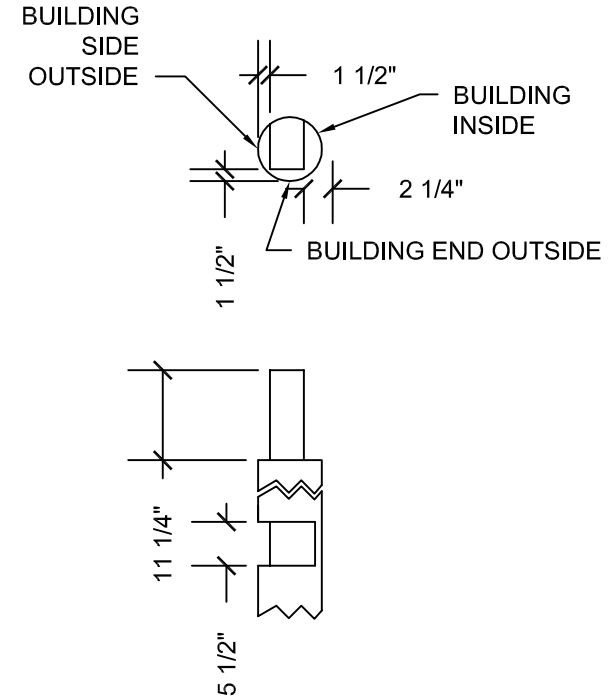
DOOR FRAME
 SCALE 1/8" = 1'



SIDE POST NOTCHING DETAIL
 SCALE 1/2" = 1'



END POST NOTCHING DETAIL
 SCALE 1/2" = 1'



CORNER POST NOTCHING DETAIL
 SCALE 1/2" = 1'

PRESSURE TREATED
2 X 4 TRIMMER BACKER
11'10 1/2" LONG

PRESSURE TREATED
2 X 4 INSIDE TRIMMER
6'10" LONG

PRESSURE TREATED
2 X 4 OUTSIDE TRIMMER
9'-1 3/4" LONG

R.O.
3'-2"

ENTRY DOOR FRAME PLAN DETAIL
SCALE 1/4" = 1'

TOP PLATE

2 X 12 BEAM

OUTSIDE TRIMMER

DOUBLE 2 X 12
HEADER

2 X 6
BEAMS

3 ROWS
PRESSURE
TREATED
2 X 6

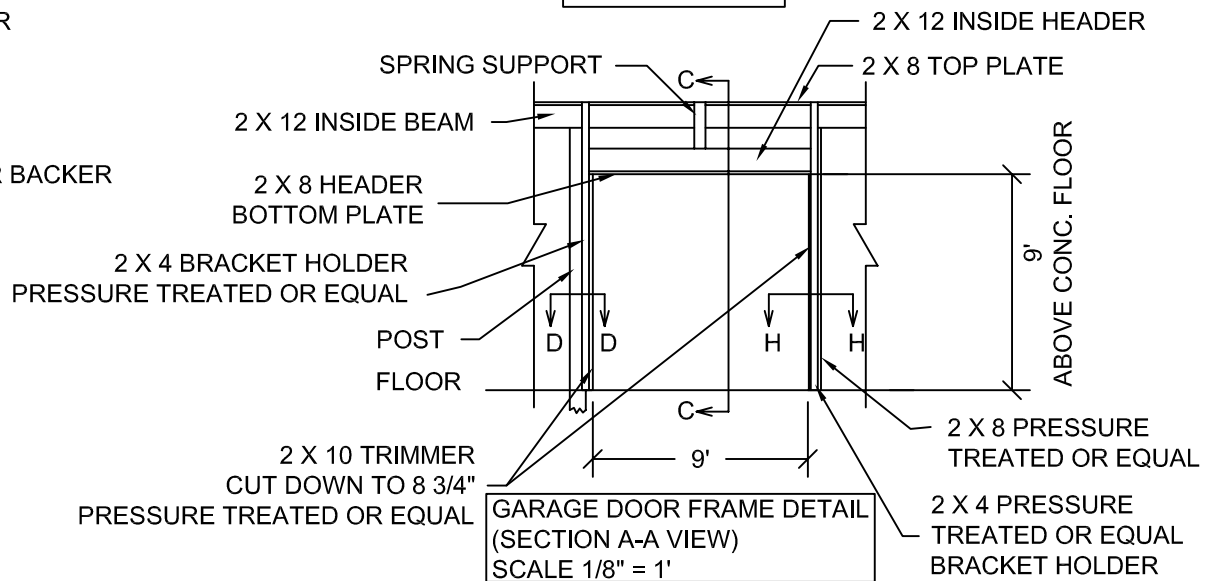
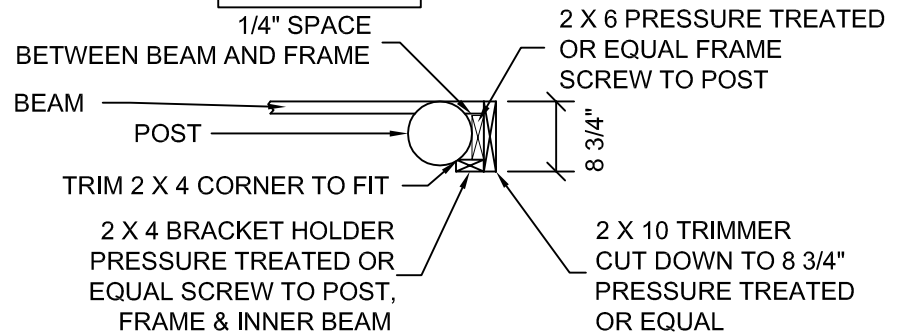
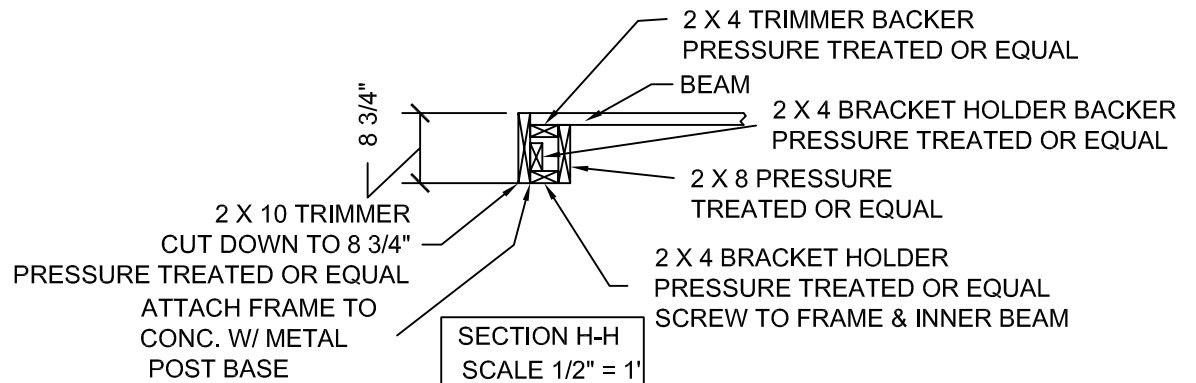
TRIMMER BACKER

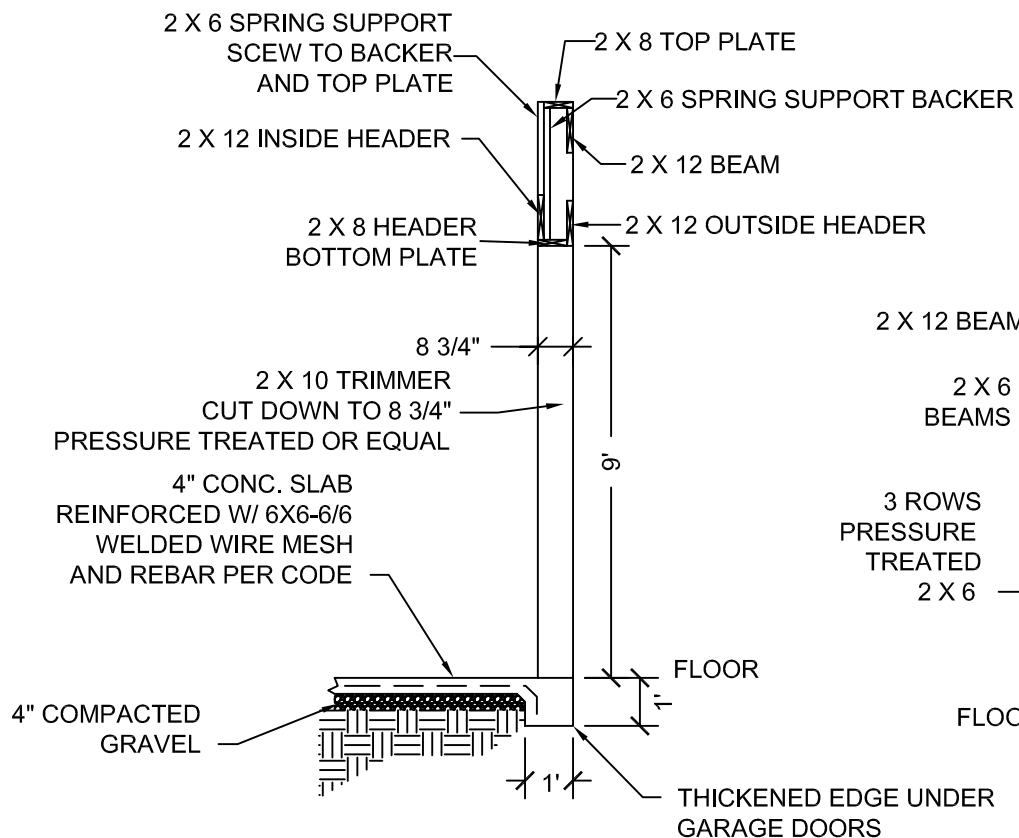
FLOOR

INSIDE TRIMMER

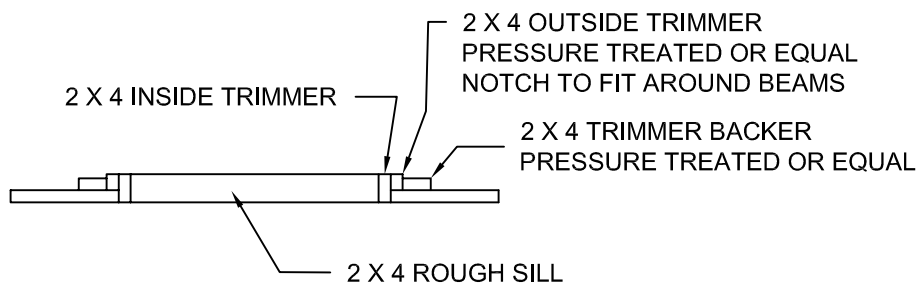
6'10"

ENTRY DOOR FRAME
ELEVATION DETAIL
SCALE 1/4" = 1'

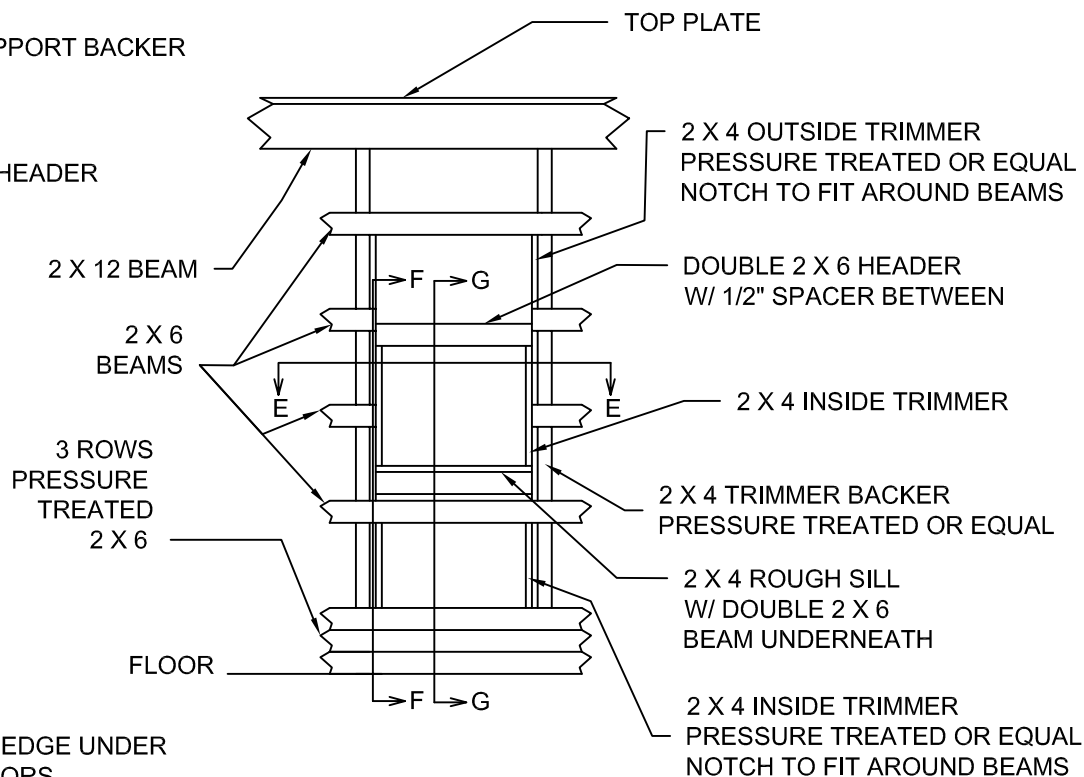




SECTION C-C
SCALE 1/4" = 1'

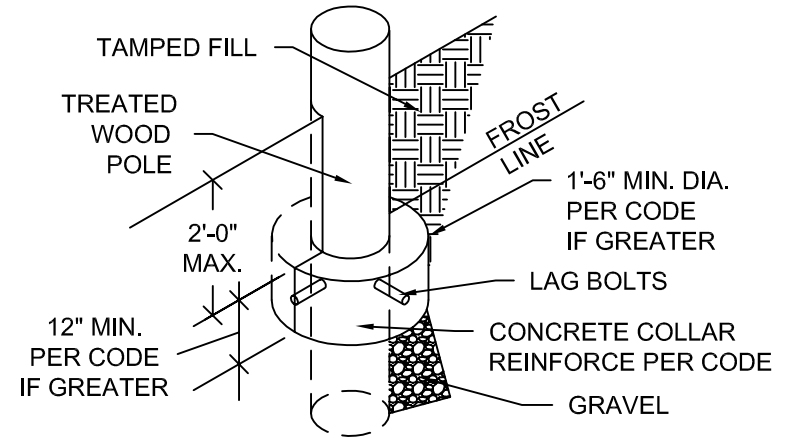
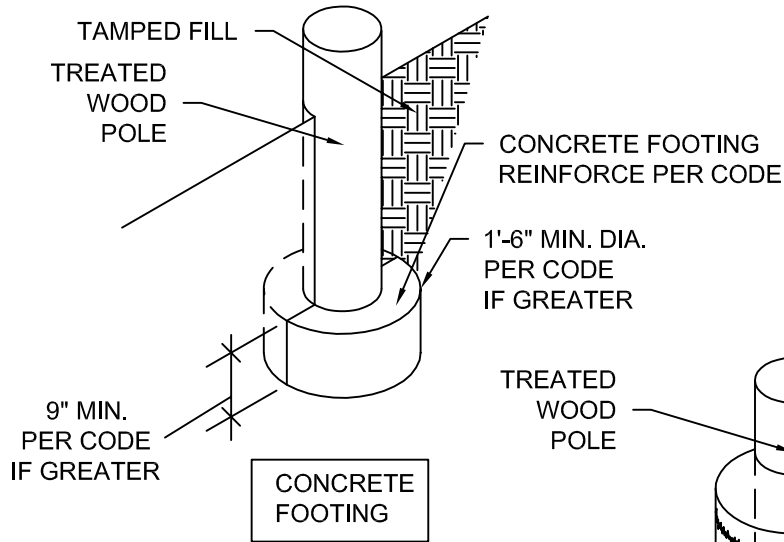


SECTION E-E
SCALE 1/2" = 1'



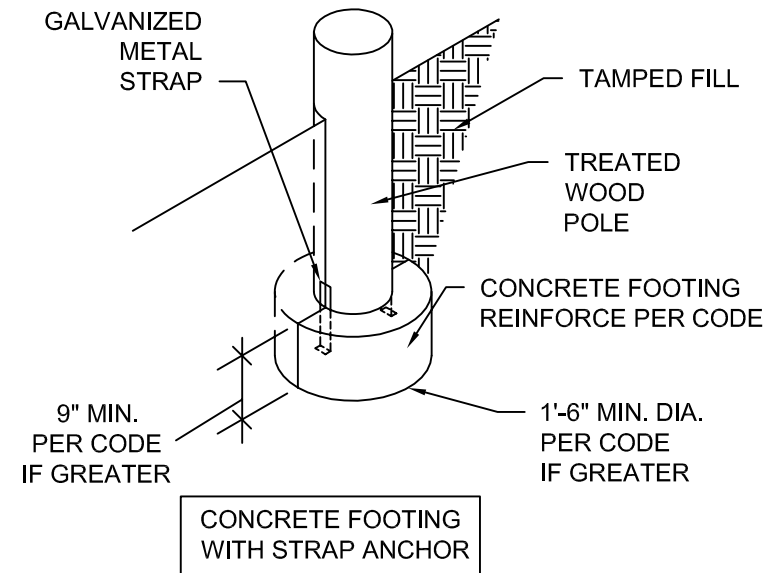
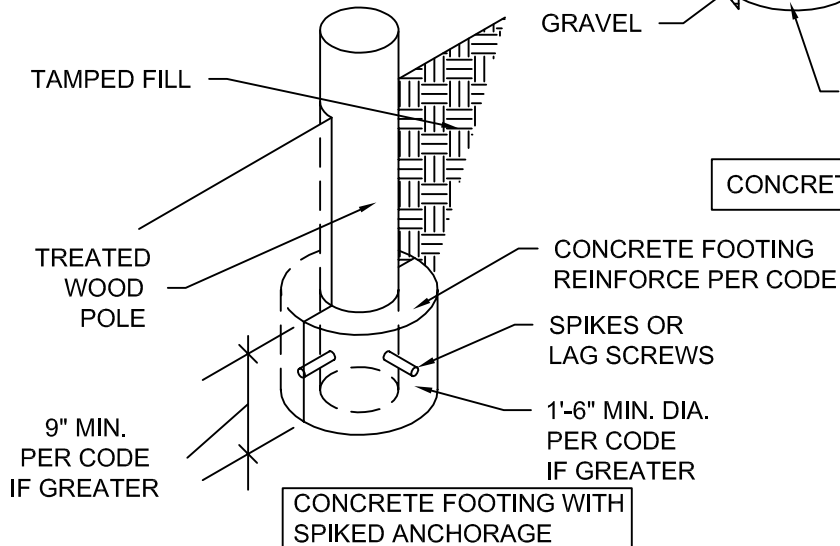
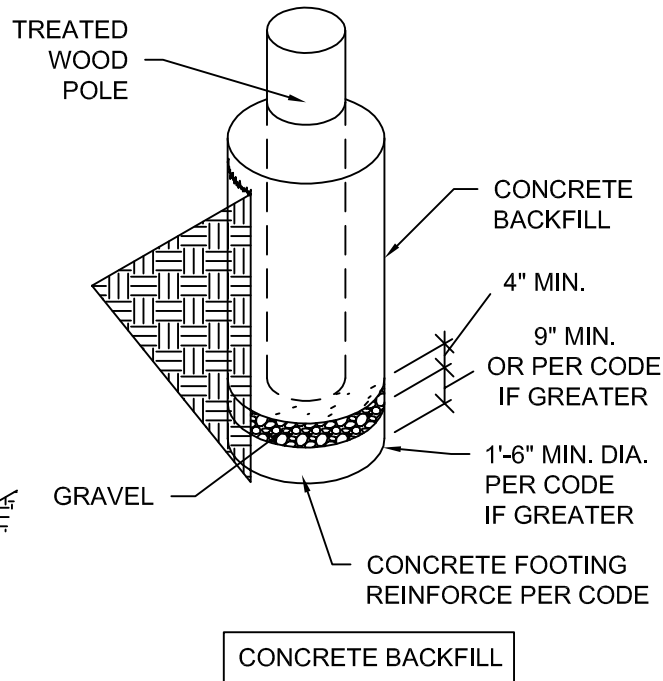
- NOTE:
1. ILLUSTRATED WINDOW ROUGH OPENING IS 3'-0" X 2'-6".
 2. WINDOW HEADER HIEGHT IS 6'-10".
 3. ADJUST ROUGH SILL HEIGHT AND OPENING WIDTH TO SUIT DESIRED WINDOW PER MANUFACTURES INSTRUCTIONS.
 4. WINDOW FRAME MATERIALS ARE NOT ON BILL OF MATERIALS LIST.

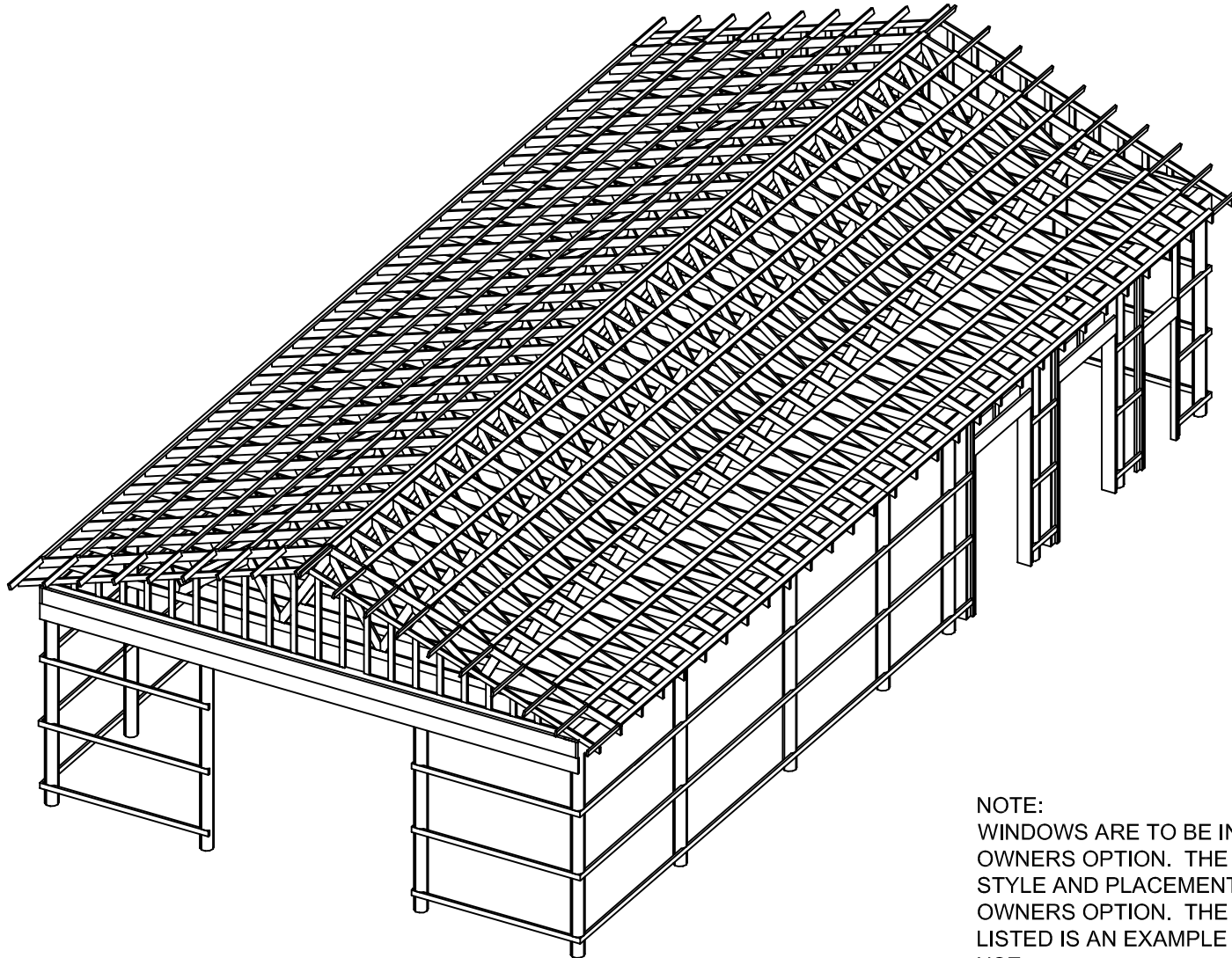
OPTIONAL WINDOW FRAME DETAIL
(OUTSIDE ELEVATION VIEW)
SCALE 1/4" = 1'



FOR USE IN TEMPERATE CLIMATES (FROST LINE NO DEEPER THAN 2'-0")

REINFORCED CONCRETE COLLAR





NOTE:
 FRAME PICTORIAL IS ONLY TO GIVE A GENERAL IDEA OF HOW FRAME PARTS FIT TOGETHER IT IS NOT AN ACTUAL REPRESENTATION OF THE FINISHED FRAME. USE THE DETAILED DRAWINGS FOR ACTUAL CONSTRUCTION INFORMATION.

NOTE:
 WINDOWS ARE TO BE INSTALLED AT OWNERS OPTION. THE NUMBER, SIZE, STYLE AND PLACEMENT ARE AT OWNERS OPTION. THE WINDOW LISTED IS AN EXAMPLE FOR OWNERS USE.

DOOR AND WINDOW SCHEDULE

SYMBOL	SIZE	DESCRIPTION	QTY
①	3' X 6'-8"	EXTERIOR ENTRY DOOR RH	1
②	9' X 9'	SECTIONAL GARAGE DOOR	2
③	10' X 10'	BIPARTING SLIDING DOOR	1
④	3' X 4'-6"	SLIDING WINDOW	4

General Specifications and Notes

General:

Construction shall meet all applicable codes and ordinances.

Site Work:

1. Make sure setbacks are in compliance with local building codes.
2. All stumps, roots, and organic matter shall be removed from the soil in the area of the building.
3. Lot must be graded to insure proper drainage away from building.
4. Soil should not be a highly expansive soil type without having a soil report performed by a soils engineer and receiving approval from local building department to construct building on said type soil.

Concrete:

1. All slabs are to be 4" concrete over 4" gravel unless otherwise noted on the plans.
2. Concrete to be ACI 301-66, Type II cement, 2500 psi at 28 days, 5" maximum slump.
3. Reinforcing to be ASTM A 615-Bars with $F_y=60$ ksi lap 30 diameter minimum at splices or weld per ACI Std. in footings.
4. Reinforcing to be ASTM A 185-welded wire mesh in slabs.

Roof Framing:

1. For spans and dimensions refer to plans.
2. Use Simpson or equal anchors at each truss to wall connection

General framing: (Douglas Fir)

1. Exterior wall framing to be as shown on drawings.
2. Framing lumber shall be Douglas Fir construction grade Fb 1450 or better unless otherwise noted.
3. Use redwood or pressure treated posts and use redwood or pressure treated lumber for beams closer than 8" to the ground.

Door and window framing:

1. Door and window manufacturer specified rough opening dimensions shall take precedence over drawing rough opening dimensions if there is a conflict.

BILL OF MATERIAL			
Size	Item	Count	Unit
8" dia. X 16' long	pressure treated post	18	ea
2x12x41"	entry door header	2	ea
2 x 12 x 8'	top beam	2	ea
2 x 12 x 10'	track backer/header	2	ea
2 x 12 x 10'	garage dr. header	4	ea
2 x 12 x 10'	top beam	23	ea
2 x 12 x 12'	track backer/header	1	ea
2 x 12 x 12'	top beam	5	ea
2 x 8 x 8'	eave fascia board	2	ea
2 x 8 x 8'	top plate	1	ea
2 x 8 x 10'	garage dr. bottom header bottom plate	2	ea
2 x 8 x 10'	top plate	14	ea
2 x 8 x 12'	top plate	3	ea
2 x 8 x 14'	eave fascia board	8	ea
2 x 8 x 18'	gable end fascia board	4	ea
2 x 6 x 8'	garage dr., spring support & backer	1	ea
2 x 6 x 8'	beam	1	ea
2 x 6 x 10'	beam	59	ea
2 x 4 x 3'	lookout	40	ea
2 x 4 x 14'	purlin	80	ea
2 x 10 x 10'	pressure treated, garage door frame	4	ea
2 x 8 x 12'	pressure treated, garage dr. frame	2	ea
2 x 6 x 12'	pressure treated, garage dr. frame	2	ea
2 x 6 x 10'	pressure treated, beam	45	ea
2 x 4 x 12'	pressure treated, garage dr. frame	8	ea
2 x 4 x 12'	pressure treated, sliding door	4	ea
2 x 4 x 11'-10 1/2"	pressure treated, entry door frame	4	ea
2 x 4 x 10'	pressure treated, sliding door	10	ea
2 x 4 x 6'-10"	pressure treated, entry door frame	2	ea
1x4	entry door casing, exterior mat'l	18	ft
	entry door jamb, exterior mat'l	18	ft
TR-1	roof truss, gable end, lookout cut	2	ea
TR-0	roof truss	29	ea
3'x12'	Siding, Vertical	72	ea
3'x17'	Roofing Metal	40	ea
	metal angle gable fascia	68	ft
	metal eave fascia	124	ft
	ridge cap, vented	60	ft
	drip edge	192	ft
36x80x1 3/4L	ext. hinged door	1	ea
9' x 9'	sectional garage door	2	ea
36 x 54	window, sliding	4	ea